

HD.5024E

Control unit

HYBRA24

Commercial-industrial use

24
VDCHIGH-
PERFORMANCE
MOTOR

>

m

5,0 m/max

kg

500 kg/max

INTEGRATED
ENCODER**Self-alignment**

The rear pivot joint makes installation easier, balancing any possible lack of alignment of the gate.

Anti-crushing safety

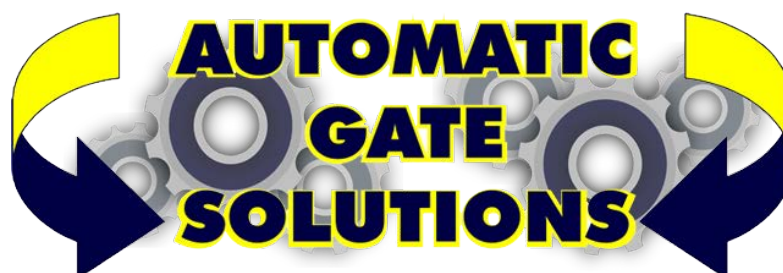
The presence of the encoder and the low voltage motor allow to optimize performance, safety level and precision in the gate movement phases.

Operating fluidity

The adjustable electronic deceleration in opening and closing allows maximum silence and fluidity of maneuver. Avoiding the strong impacts against mechanical stops also limits the risk of breakdowns in the installation.

Top performances

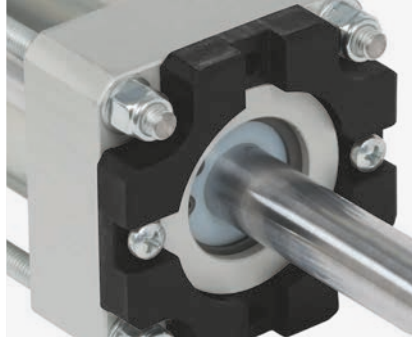
The electric motor ensures excellent performance, optimal thrust and more intensive use.

Release with customised key



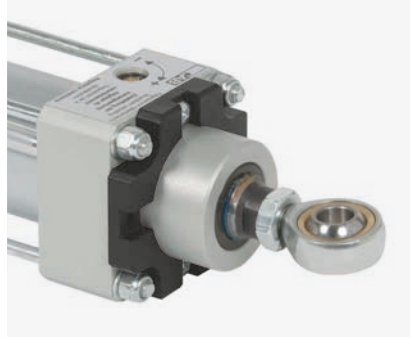
m/max
5,0

kg/max
500



Reliability and high-quality materials

Chrome-plated steel shaft and anodised aluminium profiles ensure maximum resistance to atmospheric agents. Brass bypass valves are used for greater force regulation, ensuring maximum crush-resistance.



Perfect stroke adjustment

The adjustable front spherical joint enables perfect adjustment of the stroke, the ideal solution for systems on gates that are not perfectly aligned.



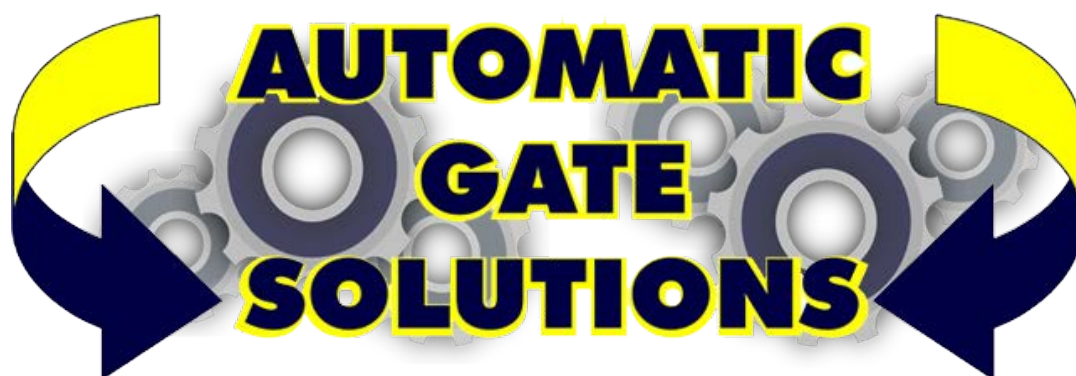
Very easy to install and maintain

Operator installation is quick and intuitive thanks to the terminal board that facilitates motor wiring. Maintenance is quick thanks to the possibility of easily replacing the power cable or control the oil level even when the operator is already installed.

Specifications

No blocks (reversible)	HD.5024E
Motor voltage supply	24 Vdc
Max absorbed current	5 A
Absorbed power	240 W
Pump flow rate	1,4 l/min
Max oil pressure	33 bar
Max thrust	4000 N
Stroke length	390 mm
Ram speed	2 cm/s
Ram shaft diameter	20 mm
Electronic slowdown	In apre-chiude In opening and closing phases
Joints	Anteriore e posteriore Front and rear
Operating temperature	-20 °C + +50 °C
Protection level	IP55
Operation cycle	Usa intensivo Intensive use
Max leaf length	5,0 m*
Max leaf weight	500 kg
Oil	D.OIL

For leaves longer than 2.0 m we recommend installing the electric lock, including in non-reversible models.



www.automaticgatesolutions.com.au