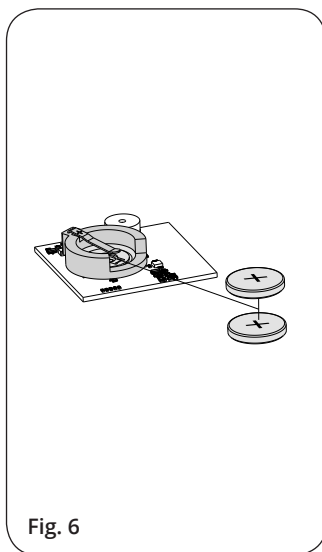
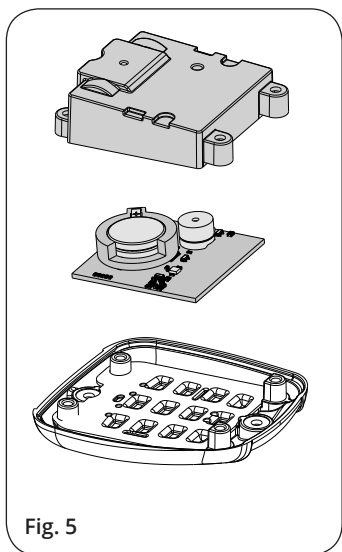
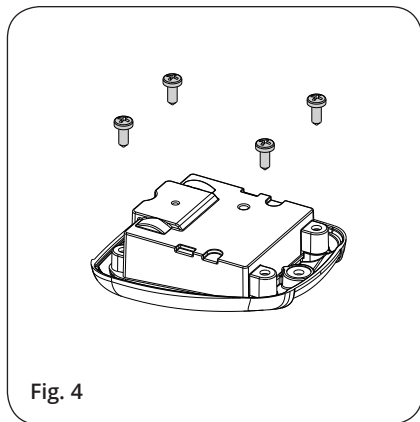
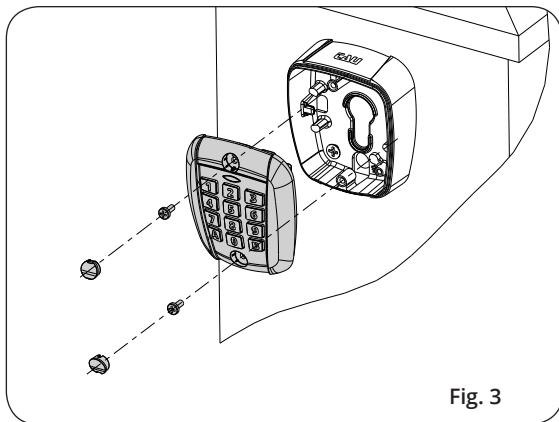
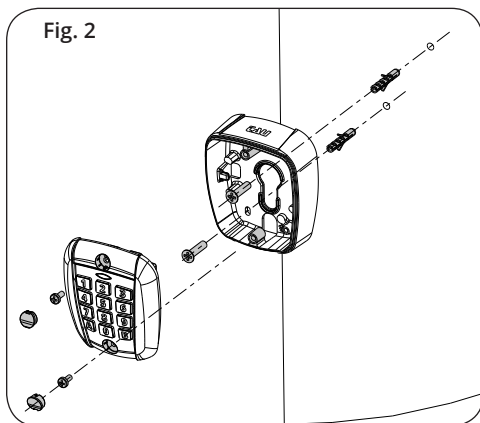
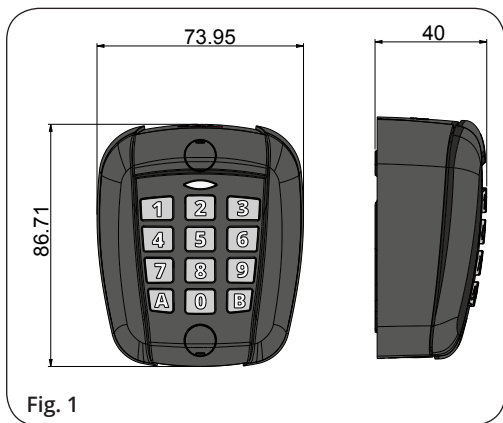


TCODE-W





TCODE-W DIGITAL KEYPAD

Digital radio keypad with ROLLING CODE programmable codes, operating with all TAU control units with integrated receiver or with RXDC / RXSM series receivers.

It is possible to manage up to a max. of 4 codes (2 ÷ 8 digits) with 2 selectable channels A or B each. Each keypad is supplied with a factory Master code = 0000 (possibly customizable) to delete the codes.

The keypad will be installed in the immediate proximity of the controllable automation control panel to allow the radio signal to reach the receiver. It is therefore recommended to test the operating distance before fixing the keypad to the wall/column. (fig. 2)

If it is necessary to control the automation at long distances, the version of the digital cable keypad with BUS signal transmission can be used.

1. KEYPAD INSTALLATION (fig. 2)

- Divide the keypad front from the housing base;
- Properly fasten the housing base to the wall or column (use the Ø 6 mm expansion plugs if the keypad is fixed to the wall, or Ø 4 mm self-drilling screws for iron or steel supports, or Ø 4 mm self-tapping screws for wood and similar supports)
- Once the housing base has been fixed to the wall or column, fit the keypad front panel (fig. 3).

2. ENTERING CODES (2 ÷ 8 digits)

To insert a new personalized code, follow the procedure:

- 1_ Press button **A** for 4 sec. until you hear a “beep” and the green led starts to flash;
- 2_ While the green LED is flashing, enter the new code (2 ÷ 8 digits);
- 3_ Then press button **B** briefly, a “beep” will be heard and the green LED will remain on for a second confirming that the new code has been entered.

To allow the gate to open/close via the keypad, the code transmitted by the control unit must be stored in the receiver.

Before proceeding with the transmission of the code, make sure you have entered programming mode on the receiver (**see the procedures indicated in the instruction manual of the specific control unit used**),

then proceed as follows:

- enter the code followed by button **A** or **B**.
- to confirm the transmission, the red LED on the control unit or receiver will go out.

For each code entered, we can combine the command of two automations by choosing **A** and **B**.

3. DELETING ONLY ONE ENTERED CODE

To delete only one code, follow the procedure:

- 1_ Press button **A** for 4 sec. until you hear a “beep” and the green led starts to flash;
- 2_ While the green LED is flashing, enter the code you want to delete (2 ÷ 8 digits);
- 3_ Then press button **B** for 4 sec. until you hear a “beep” and the LED starts flashing red and green together and then briefly press button **B** again. At this point, to confirm code deletion, the red and green LED will stop flashing.

4. DELETING ALL CODES

If you wish to return the keypad to factory conditions without any code entered, proceed as follows:

- 1_ Press button **A** for 4 sec. until you hear a “beep” and the green led starts to flash;
- 2_ While the green LED is flashing, enter the Master code (if factory = 0000; or the one created by you).

3_ Then press button **B** for 4 sec. until you hear a “beep” and the LED starts flashing red and green together and then briefly press button **B** again. At this point, to confirm codes deletion, the red and green LED will stop flashing.

5. CHANGING THE MASTER CODE

To change the Master code, follow these steps:

- 1_ Press button **A** for 4 sec. until you hear a “beep” and the green led starts to flash;
- 2_ While the green LED is flashing, enter the Master code (if factory = 0000; or the one created by you).
- 3_ Press button **A** again for 4 sec. until you hear a “beep” and the green LED starts flashing quickly;
- 4_ While the green LED is flashing quickly enter the new Master code;
- 5_ Then press button **B** briefly, a “beep” will be heard and the green LED will remain on for a second confirming that the new code has been entered.

6. REPLACING THE BATTERY (fig. 4-5-6)

The TCODE-W digital keypad works using two 3V lithium batteries of the CR 2032 series. The duration of the same depends on the number of daily activations, in a residential context it exceeds two years, in a condominium context it will depend on the number of users. To replace them, it will be necessary to open the keypad as shown in figure 4-5.



Via Enrico Fermi, 43 - 36066 Sandrigo (VI) - Italy
Tel +39 0444 750190 - Fax +39 0444 750376
info@tauitalia.com - www.tauitalia.com